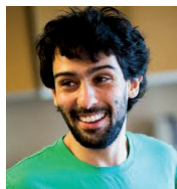




Pascal DA COSTA
Professor
Chair holder



Mehdi SENOUCI
Assistant Professor



Emilien RAVIGNE
PhD Candidate

Research

The Sustainable Growth Chair is a private sponsorship by the CapitalDon endowment fund. His research topic is the impact of innovation and market structures, related to energy and the environment, in particular, on potential growth, dynamics economic systems, including redistributive effects (inequalities).

Emilien Ravigné's thesis is funded under this Chair and deals with the redistributive effects of climate policies, a highly topical subject.

Keywords:

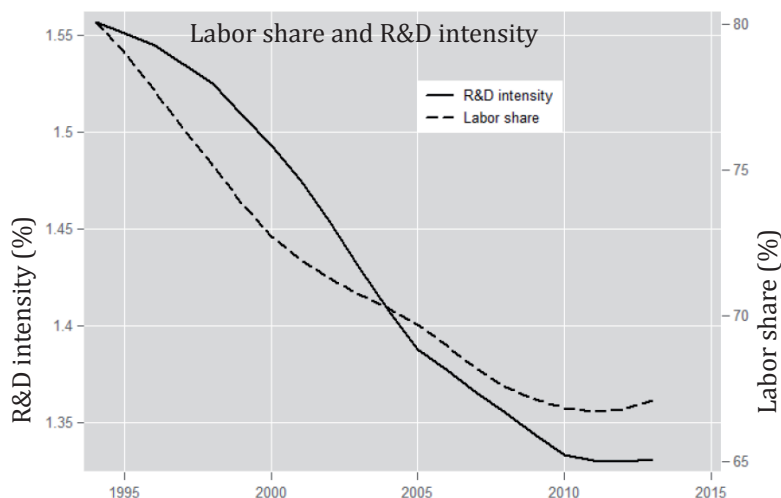
Innovation-based growth, Economics of Climate and energy, Jobs, Inequalities and innovations, Redistributive effects.

Publications

G. V. Houngebnon and **Pascal da Costa**, Declining Labor Share and Innovation, forthcoming.

From Factor-Four mitigation to Zero-Net Emissions: Is a fair transition possible? Evidence from the French Low-Carbon Strategy, F. Gherzi, Franck Nadaud, **Emilien Ravigné** (Dec 2020, Paris) Evaluation des Politiques Publiques, AFSE; Direction Général du Trésor, .

Quels impacts distributifs des politiques environnementales ? What are the distributive impacts of environmental policies? **Emilien Ravigné** (2020) Regards croisés sur l'économie, Association Regards Croisés sur l'Économie.



Note: Local polynomial smoothing of the trends in R&D intensity and labor share. We use the epanechnikov kernel with a polynomial of degree zero (constant) and the bandwidth of 2.36 for labor share and 3.56 for R&D intensity

Declining Labor Share and Innovation
Georges V. Houngebnon & Pascal Da Costa